

SOIL VOLUME ESTIMATES FOR FURTHER EVALUATION WITH DEPARTMENT OF TOXIC SUBSTANCES CONTROL

(Key Soil Samples Within Blocks Noted Below)

BLOCK NO. VOLUME (cy)

T1	
B-9	100
SB-3	500
AG-2	300
AG-4	400
AG-5	200

T2	
IDT-1	400
IdTP 2-3	200
SB-4	200
SB-8	200

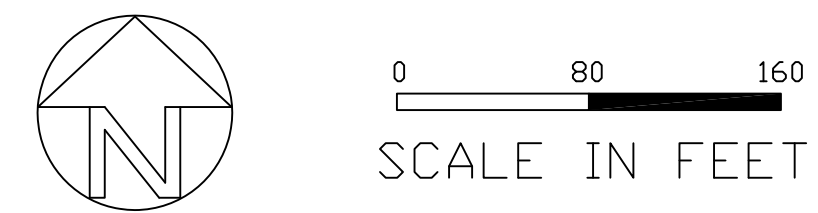
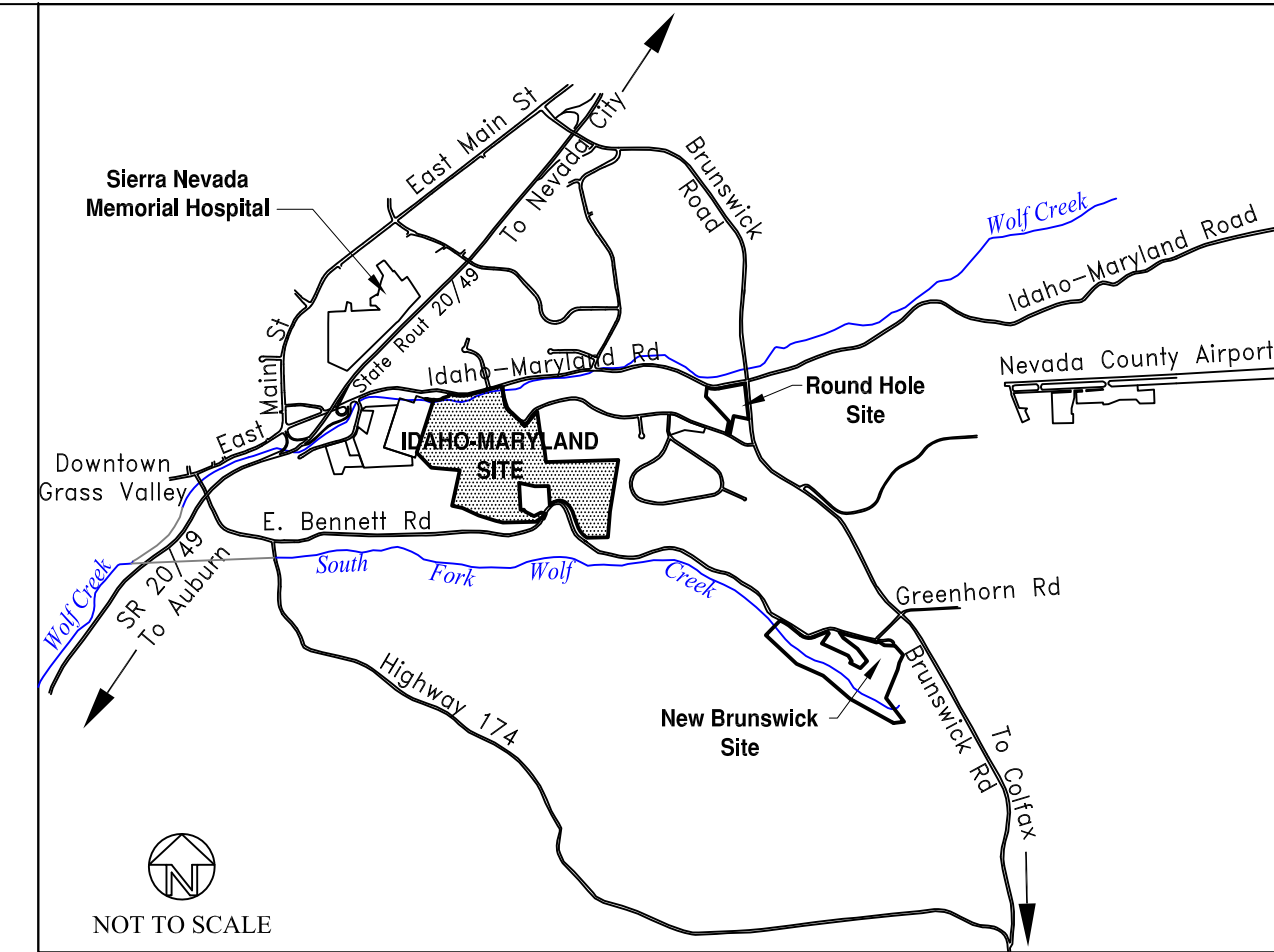
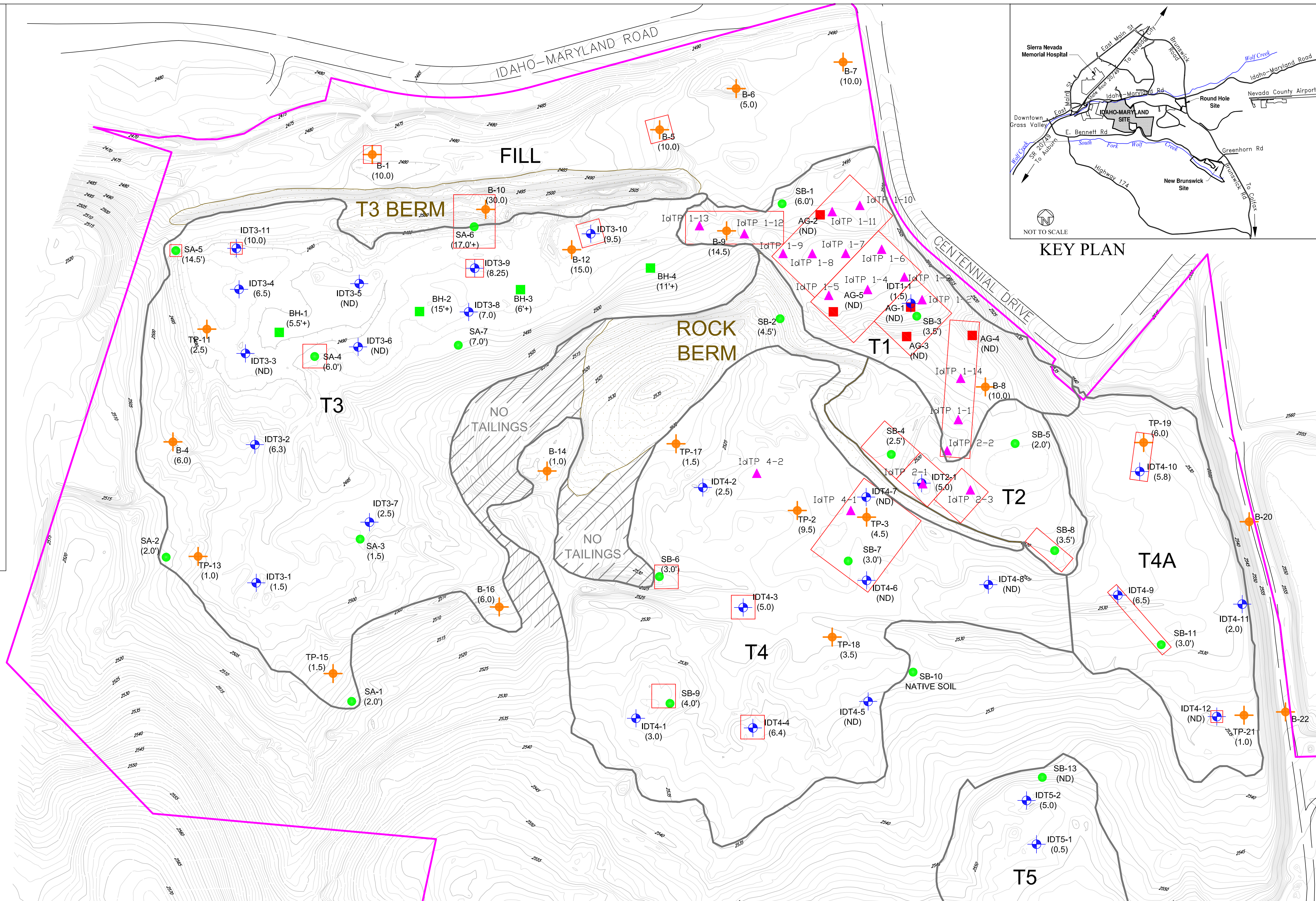
T3	
B-10	400
IDT 3-9	300
IDT 3-10	400
IDT 3-11	40
SA-4	600
SA-5	10

T4	
B-19	400
IDT 4-3	400
IDT 4-4	400
IDT 4-7	2,000
IDT 4-9	300
IDT 4-12	20
SB-6	200
SB-9	200

OUTSIDE BLOCK AREAS (Fill of Unknown Origin)

B-1	30
B-5	400

TOTAL 12,200 cy



KEY

- B-1, TP-11 ENGENO (2007) SAMPLE LOCATIONS-Borings and Test Pits
- IDT4-1 IMMC SAMPLE LOCATION (2006)
- IdTP IMMC SURFACE SAMPLES (2004)
- SA-5, SB-5 VECTOR SAMPLE LOCATIONS (1993)
- BH-2 VECTOR SAMPLE LOCATIONS (1990)
- AG-1 ANDERSON SAMPLE LOCATIONS (1989)
- (1.5) DEPTH TO NATIVE SURFACE
- ABOVE TOTAL THRESHOLD LIMIT CONCENTRATIONS
- T1, et al - BOUNDARIES OF HISTORICAL TAILINGS MAPPED BY IMMC GEOLOGIST

NO.	DATE	REVISIONS	BY	CHK	DATE	DATE	DATE
B	04-11	Issued For Permitting			4-8-11	4-8-11	4-8-11
A	04-07	Issued For Permitting			PN	DGW	

NOTICE
This document and the information shown thereon is confidential, and has been prepared for the exclusive use of Idaho-Maryland Mining Corporation (IMMC) and is intended solely for the use of IMMC. Any use of, and/or reliance on, this document or its contents by any party is at such party's sole and complete risk. By use of this document, recipients agree that IMMC shall not be held responsible or liable for any damages or claims (whatsoever or howsoever caused) arising from use of, or reliance on, this document. This drawing and/or the information contained herein shall not be copied, in whole or in part, without the prior written consent of IMMC. Copies of this document, in whole or in part and made for any use, shall include this note on each copy and on each subsequent copy.



**Idaho-Maryland Mine Project
Grass Valley, California**

**Summary of Historic
Mine Residue Sampling
1989 - Present**

PLATE:
N2D

4-8-11