

Prepared By:
 **aci engineering ltd**
 Suite 1430 - 1188 West Georgia St.
 Vancouver, B.C. V5E 4A2
 www.aciengineering.com

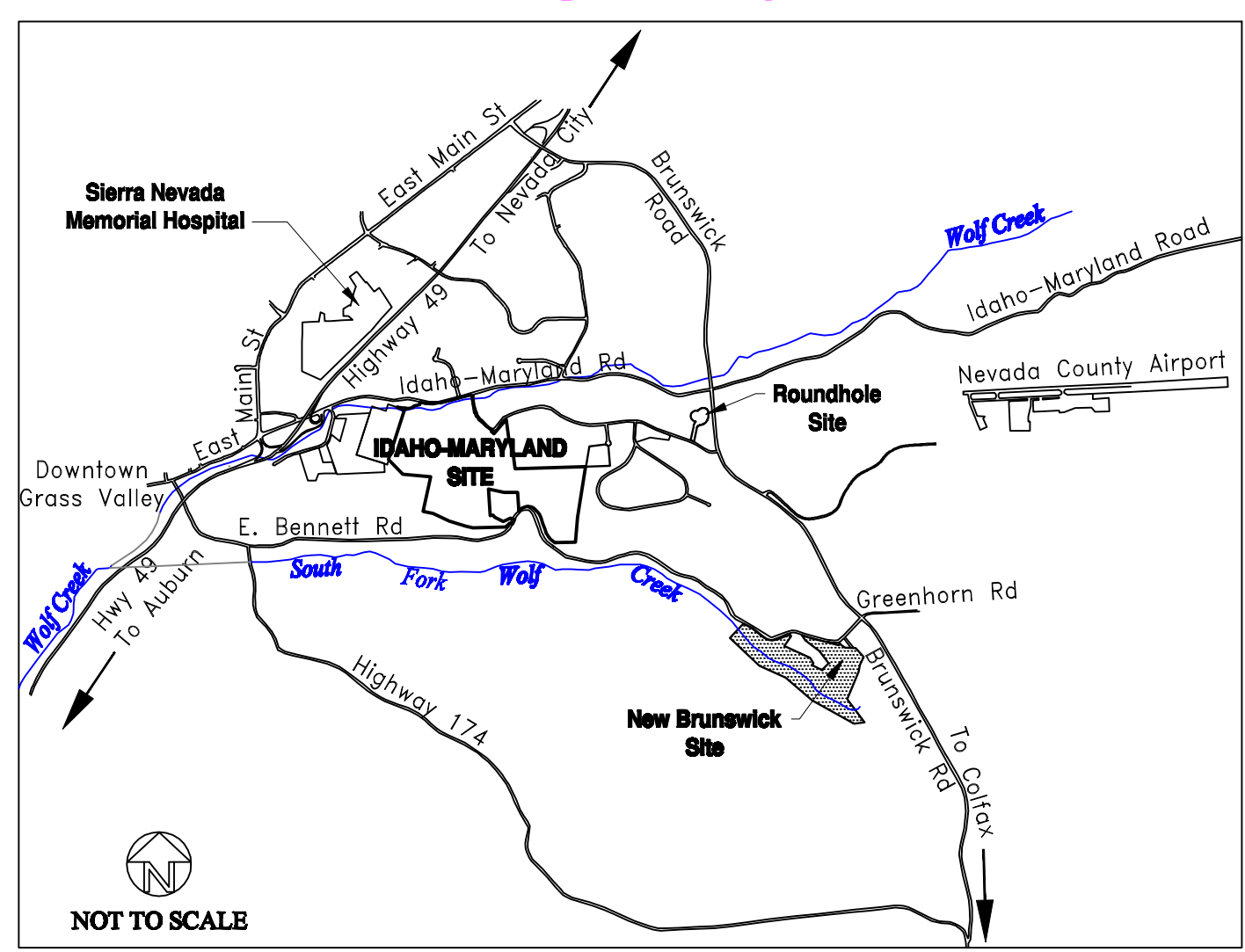
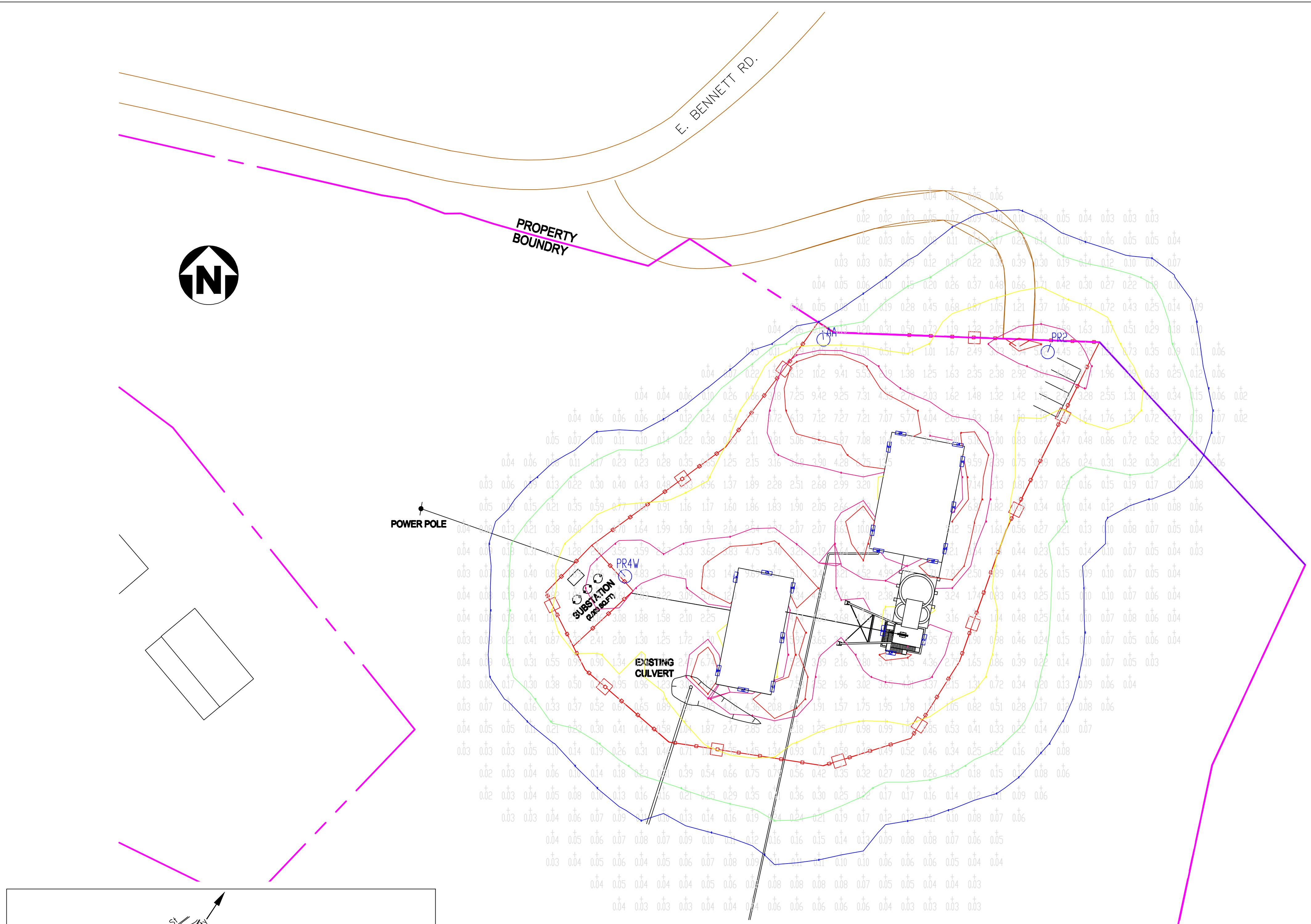
CALCULATION SUMMARY		
DIMENSIONS	GRID TYPE	SPACE
681.50x588.00 ft	HORIZONTAL / H-H	15 ft

DESIGN CRITERIA			
TYPE AREA	BASIS OF DESIGN AVG HDR. ILLUM. (Fc)	UNIFORMITY RATIO (Avg/Min)	REFERENCE
PARKING LOT	1	10	IESNA LIGHTING HANDBOOK, 9 ED
ACTIVE YARD	3	N.A.	OSHA 1926.56
SUBSTATION	2	N.A.	IESNA RP-7-01

ILLUMINANCE SUMMARY (Fc)		
LOCATION	AVERAGE ILLUMINANCE (Fc)	UNIFORMITY RATIO (Avg/Min)
PARKING LOT	2.82	3.19
ACTIVE YARD	3.79	5.26
SUBSTATION	2.85	2.53

NEW BRUNSWICK PROJECT (1079B) LUMINAIRE SCHEDULE							
TYPE	SYMBOL	DESCRIPTION	LUMENS	MOUNTING HEIGHT (ft)	TILT ANGLE (DEG, CW)	LLF	QTY
AA	⊙	LITHONIA HPS FLOOD LIGHT 1x1000W RME	140000	30	70	0.72	1
PR2	⊙	LITHONIA HPS RD LIGHT 1X400W R2 KSF2-400S	50000	30	0	0.72	1
PR4W	⊙	LITHONIA HPS RD LIGHT 1X400W R4W KSF2-400S	50000	30	0	0.72	1
WL9	⊞	LITHONIA TWH150-S 150W HPS WALLPACK	16000	9	N.A.	0.72	6
WL15	⊞	LITHONIA TWH150-S 150W HPS WALLPACK	16000	15	N.A.	0.72	6
W_9	⊞	LITHONIA TWH250-S 250W HPS WALLPACK	27500	9	N.A.	0.72	1
W_15	⊞	LITHONIA TWH250-S 250W HPS WALLPACK	27500	15	N.A.	0.72	2
W_24	⊞	LITHONIA TWH250-S 250W HPS WALLPACK	27500	24	N.A.	0.72	4

CONTOUR LEVELS (Fc):
 A= 5.00 B= 3.25 C= 1.00 D= 0.20 E= 0.10



NO.	DATE	REVISIONS	BY	CHK	DRAWN: DM	PROJECT:	SCALE: AS SHOWN
A	04-07	Issued For Permitting			DATE: 03-07	APPROVED: PN	DATE: 4-9-07
					CHECKED: PN	APPROVED: DGW	DATE: 4-9-07

NOTICE
 This document and the information shown thereon is confidential, and has been prepared for the exclusive use of Idaho-Maryland Mining Corporation (IMMC) and it is intended solely for the use of IMMC. Any use of, and/or reliance on, this document or its contents by any party is at such party's sole and complete risk. By use of this document, recipients agree that IMMC shall not be held responsible or liable for any damages or claims (whenever or howsoever caused) arising from use of, or reliance on, this document. The drawing and/or the information contained herein shall not be copied, in whole or in part, without the prior written consent of IMMC. Copies of this document, in whole or in part and made for any use, shall include this note on each copy and on each subsequent copy.



Idaho-Maryland Mine Project
Grass Valley, California

New Brunswick Site
Lighting Plan

PLATE:
R19

R19-NSR-2014-01