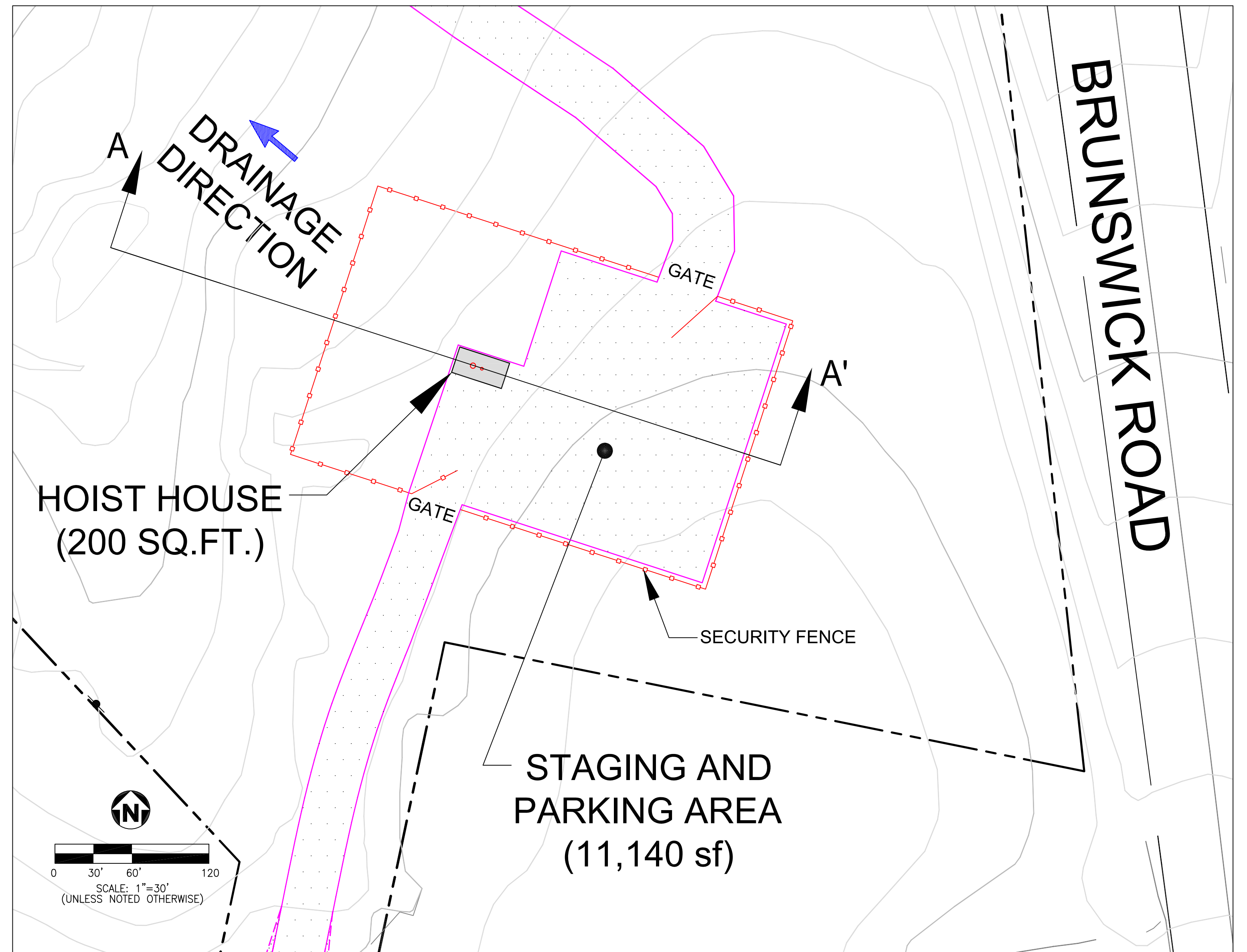
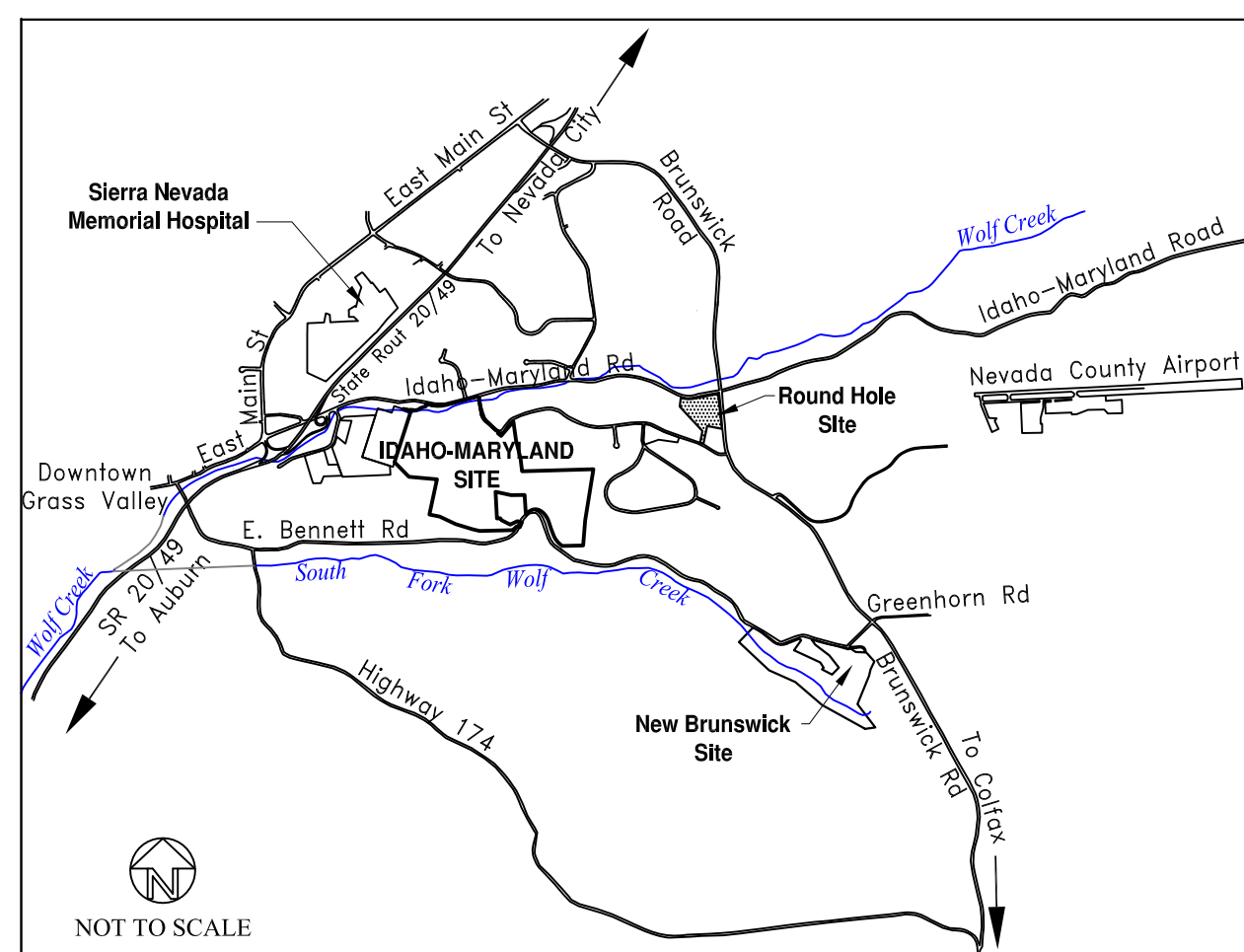


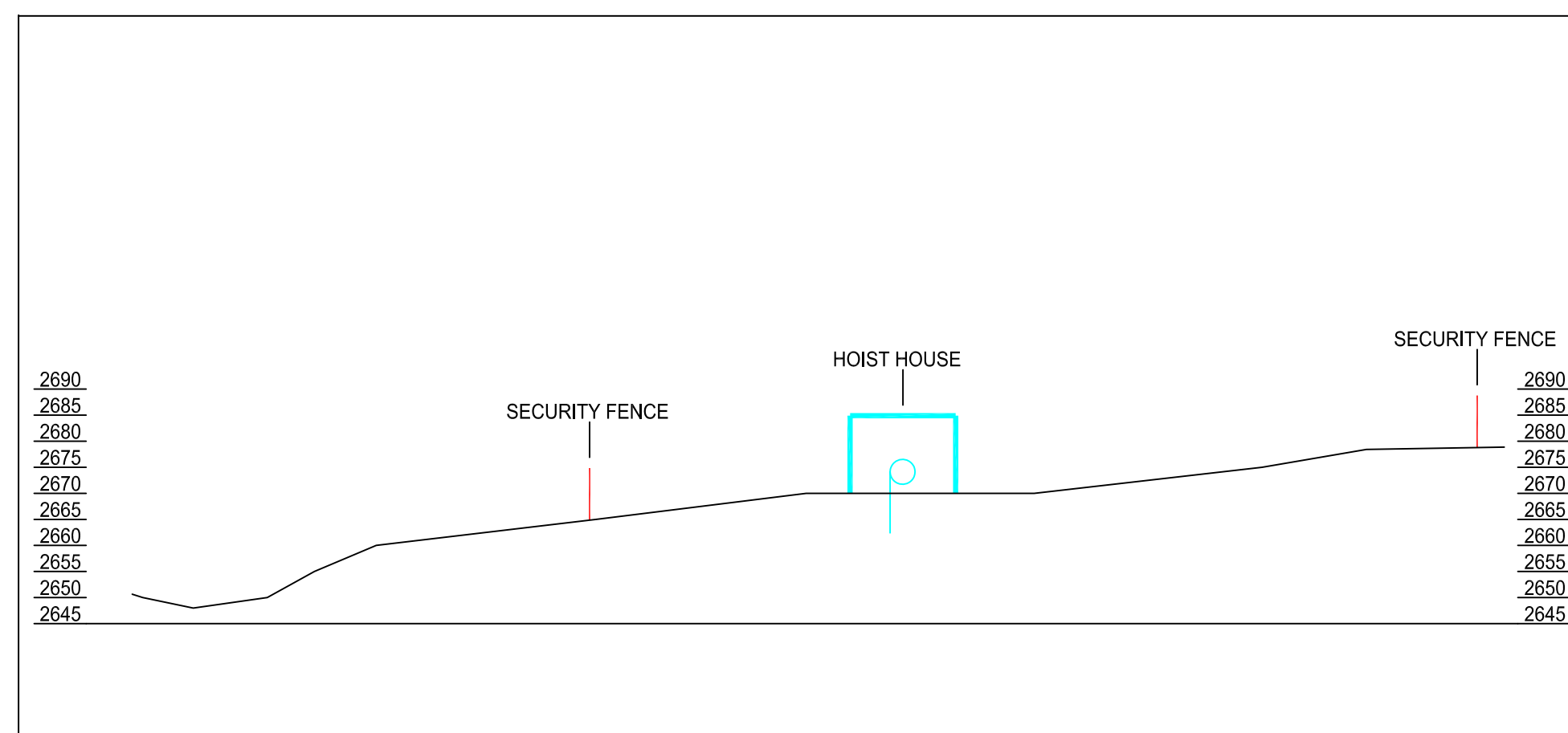
ROUND HOLE SITE VICINITY



ROUND HOLE SITE PLAN



KEY PLAN



SECTION A - A' LOOKING NORTHERLY

- LEGEND**
- PAVED AREAS
 - GRAVEL AREAS
 - PROPERTY BOUNDARY
 - SECURITY FENCE

NOTE:
All Area Sizes Are Approximate

NO.	DATE	REVISIONS	BY	CHK	DRAWN: DPH	PROJECT:	DATE: 4-8-11	SCALE: AS SHOWN	NOTICE
B	04-11	Issued For Permitting			CHECKED: PN	APPROVED: DGW	DATE: 4-8-11	DATE: 4-8-11	This document and the information shown thereon is confidential, and has been prepared for the exclusive use of Idaho-Maryland Mining Corporation (IMMC) and is intended solely for the use of IMMC. Any use of, and/or reliance on, this document or its contents by any party is at such party's sole and complete risk. By use of this document, recipients agree that IMMC shall not be held responsible or liable for any damages or claims (whatsoever or howsoever caused) arising from use of, or reliance on, this document. This drawing and/or the information contained herein shall not be copied, in whole or in part, without the prior written consent of IMMC. Copies of this document, in whole or in part and made for any use, shall include this note on each copy and on each subsequent copy.
A	04-07	Issued For Permitting			DATE: 4-8-11	DATE: 4-8-11			



Idaho-Maryland Mine Project
Grass Valley, California

Round Hole Site Plan

PLATE:
R3-Rev2

4-8-11 2:RoundHoleSitePlan2011